

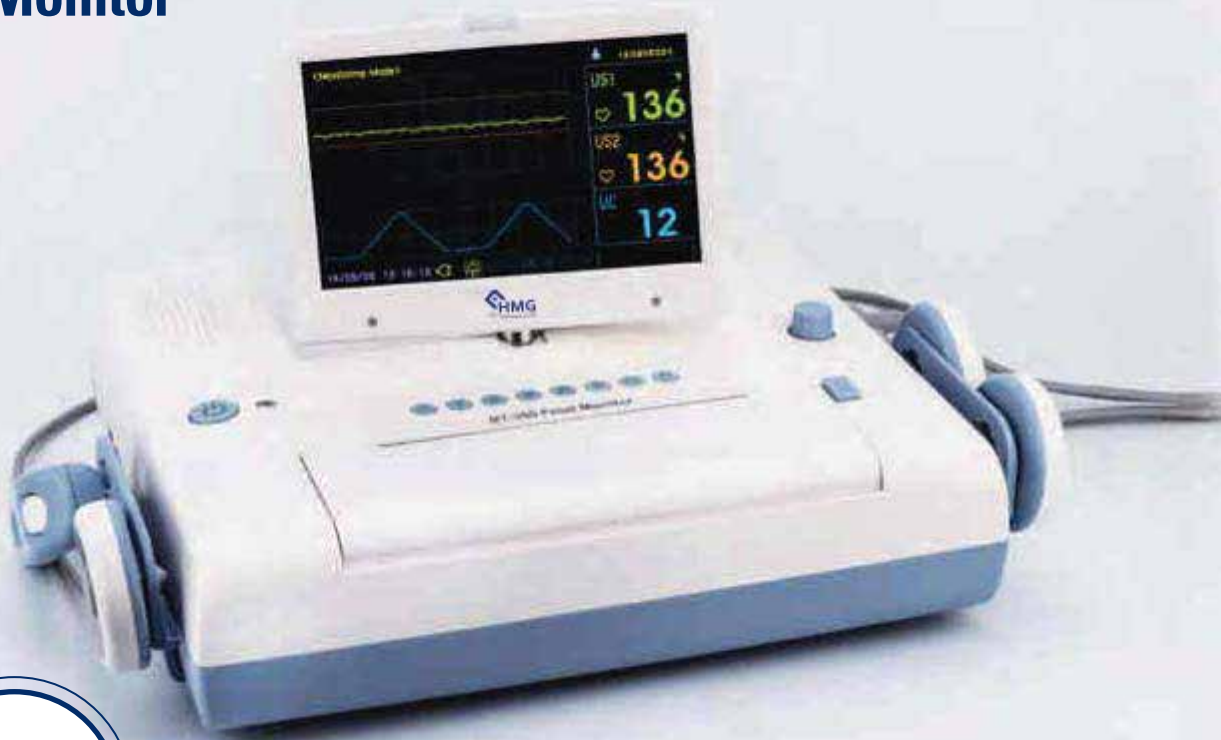


# Fetal Monitor

HMG-331



# Fetal Monitor



Advanced Fetal Monitor dedicated to Fetal health monitoring



Wall mount



Carrying bag

# Fetal Monitor



Graphic mode



Number mode



USB port for data export

## ● HMG-331 LCD

displays trace and numbers. Stored data can be reviewed afterward.

## ● CTG Analysis\*

calculates important data such as baseline, Acceleration, Deceleration, fetal movement.

## ● Cross Channel Verification

prevent the FHR is miscalculated by twin fetus by alarm.

## ● Multi Language Support\*

13 languages including English, Chinese, Spanish, German, Russian, Portuguese and more languages are available.

## ● Built-in Quick Guide\*

Quick guide in the menu screen helps the user get to understand how to use and maintain the monitor properly.

## ● Various Paper Selection

can use two most usual papers in the market (30-240bpm / 50-210bpm)

## ● USB Data Save

FHR and UC trend data can be exported to USB memory stick and it can be managed by BCM Central Monitoring Software

## ● Central Monitoring Software

Works on BCM software along with other Fetal monitors by wire or wireless.

\*HMG-331 LCD only

# Technical Specification

Model	Fetal Monitors
Code	HMG- 331
Dual DOP Probe	●
FHR Range (BPM)	30 ~ 240 / 50 ~ 210
DOP2 Offset (20BPM)	●
Auto FM Detection	●
FM Graph Print	●
DOP Signal Quality Indicator	●
UC Probe	External Type
UC Range	0 - 100
Waterproof Probe (IPX8)	●
Display Type	7" Color LCD
Wall Mount	○
Trend Display	●
Trend Data Save	450 Hours
Alarm Sound Level	2 levels
Alarm Sound	Tachycardia, Bradycardia
Information Sound	Probe Disconnection, Printer door open, No Paper, Low Battery
Printer Speed	1, 2, 3cm/minute, 10cm/min(Trend mode only)
Thermal Paper (Z-fold)	150mm(W) x 13.5m(L)
Auto Print	10, 20, 30, 40, 50, 60minute

● Standard ○ Option

Model	Fetal Monitors
Code	HMG- 331
Paper Select (30-240/50-210)	●
Patient ID/Name Print	●
Cross Channel Verification	●
CTG Interpretation	●
Data Save to USB Memory	●
Multi Langage Support	●
On-Screen Quick Guide	●
PC Interface	RS-232C / Ethernet
BCM-350 CMS	●
Power	AC100-240V (50/60Hz) DC18V/2.5A
Weight (Kg)	3.5
Dimensions (HxWxD) - mm	240 x 405 x 360
Carrying Bag	○
Rechargeable Battery	○
Battery Life (h)	5
Acoustic Stimulator	○
Cart	○
External Bluetooth Connector	○